

MRE200

MR Mini 3G 2100

Description

The MR Mini 3G Repeater Kit is compatible with all high speed 3G 2100MHz data networks and effectively provides a strong and reliable phone signal in places with poor reception.

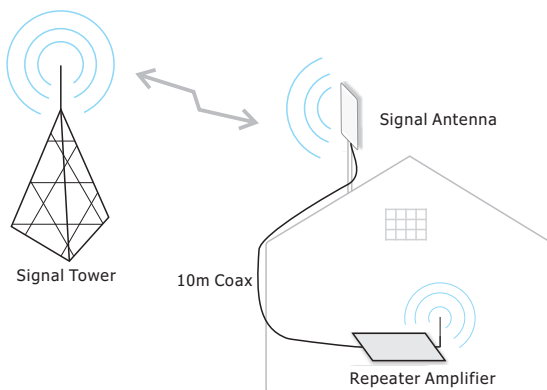
The Mini 3G kit comes with everything you need to boost coverage in your area! This product is simple to install, comes with 100% free technical support and is posted from the UK.



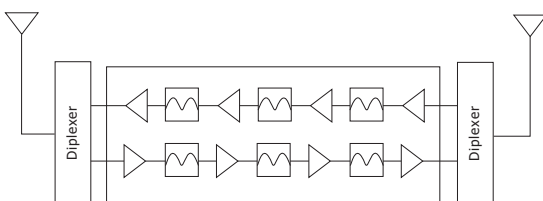
Key Features

- ✓ 3G 2100MHz Networks
- ✓ 55 dB gain
- ✓ Coverage up to 250 sq m
- ✓ High gain signal antenna
- ✓ Supports 10 simultaneous users
- ✓ Works with most UK and European providers
- ✓ Money back warranty

Working Principle



System Diagram



Package includes

- 1 x MR Mini 3G repeater
- 1 x External dual band signal antenna
- 1 x 10 m coax to connect to repeater
- 1 x AC/DC power supply
- 1 x Easy to follow installation manual

Electrical Specifications

Item	Uplink	Downlink
Frequency (GSM900)	1920-1990MHz	2110-2180MHz
Maximum Gain	≅ 50dB	≅ 55dB
Ripple in Band	≅ 5dB	
Max. Input Power without damage	- 50 dBm	- 80 dBm
Output Power	≅ 17 dBm	
Spurious Emission (9KHz-1GHz)	≅ -36dBm	≅ -36dBm
Spurious Emission (1GHz-12.75GHz)	≅ -30dBm	≅ -30dBm
Noise Figure @ Max. Gain	≅ 6dB (Typical)	
Return Loss	≅ 3dB	
Time Delay	≅ 0.5μs	
MTBF	> 50000hours	
Power Supply	DC 12V 2A	
Power Consumption	< 10 Watt	
Impedence	50 ohm	

Mechanical Specifications

RF Connector	N-Female
Cooling	Heatsink convection cooling
Dimensions (DxWxH)	350 x 246 x 60 mm
Weight	1710 Gram
Environment Conditions	IP 40
Humidity	< 90%
Operating Temperature	-10C - 60C

